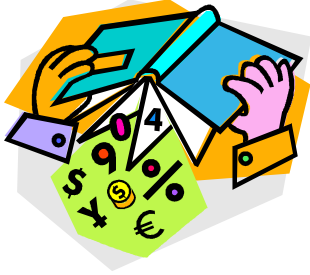


*Due Date!*  
*All Classes: Monday, October 1, 2007*

## *Fraction Facts*



Below are five fractions:

$$\frac{1}{4}$$

$$\frac{1}{3}$$

$$\frac{1}{9}$$

$$\frac{1}{2}$$

$$\frac{1}{12}$$

Part A: Write these fractions in order from smallest to largest.

Part B: Jose told Chris that for fractions with a "1" in the numerator, the larger the number in the denominator the smaller the fraction. Is Jose correct about this? How do you know?